

View Point

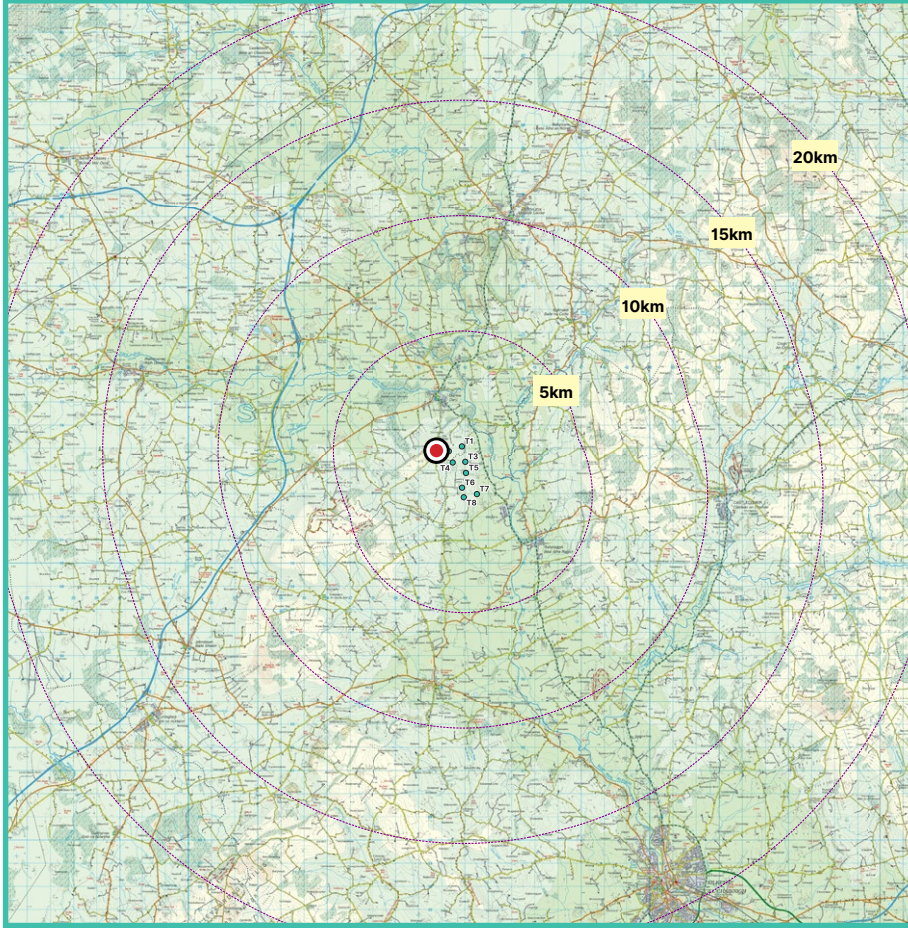
14

Archerstown North-East

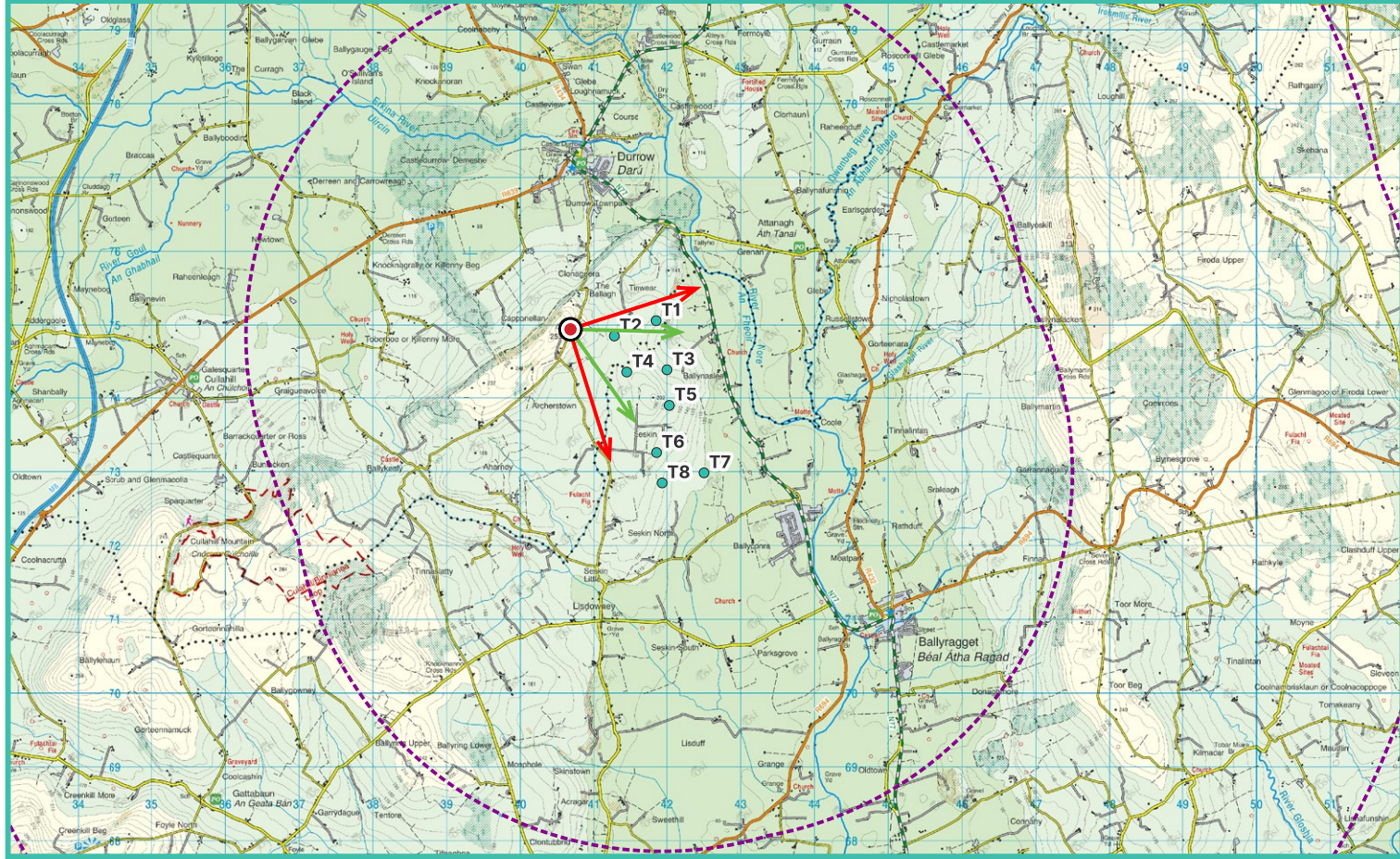
Photomontage 14

View from an elevated vantage point along the L5753 Local Road in the townland of Archerstown. Located approx. 600m north of the nearest Proposed turbine (T02).

View point grid reference	E 640636 N 674983
Date of image taken	26.11.2024
Time of image taken	16:14
View point elevation	228m
Angle of Views	90° / 53.5°
View Direction (Image Centre)	117°
Horizontal extent of proposed turbines	65°
Number of proposed turbines visible	8/8
Turbine Hub Height	100m
Turbine Tip Height	175m
Turbine Rotor Diameter	150m
Montage Type	Type 4* Photomontage / Photowire / Survey / Scale Verifiable
Camera & Lens	Canon 5D Mark III / Full Frame Sensor with a 50mm Lens
Tripod	Manfrotto 190X extended to approx 1.5m.
Guidance	* Visual Representation of Development Proposals, Landscape Institute Technical Guidance Note 06/19, 2019
Map Licence	© Ordnance Survey Ireland. All rights reserved. Licence number CYAL50267517

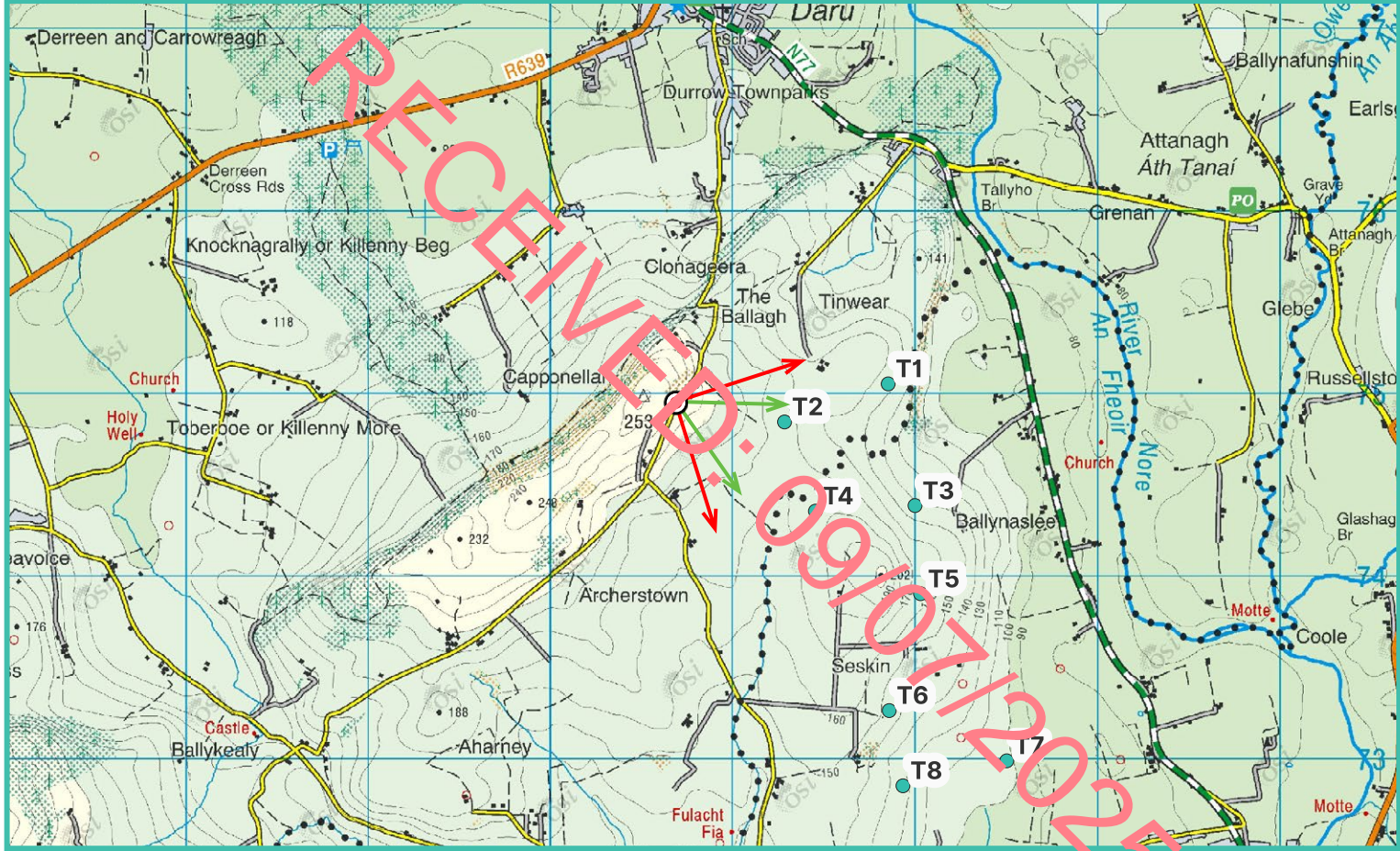


View point relative to 20km radius.



View point relative to proposed wind farm site.

90° View Extent



Detail of view point location.

Map Legend

- Area shown in 90° view
- Area shown in 53.5° view
- View Point

Wireline Legend

- Proposed Seskin Renewables Wind Farm
- Proposed Met Mast (100m)
- Existing Wind Farms
- Permitted Wind Farms
- Proposed Wind Farms

Prepared by
MKO
Planning & Environmental Consultants
Tuam Road, Galway.

Tel: (091) 73 56 11
E-mail: info@mkoireland.ie
Website: www.mkoireland.ie

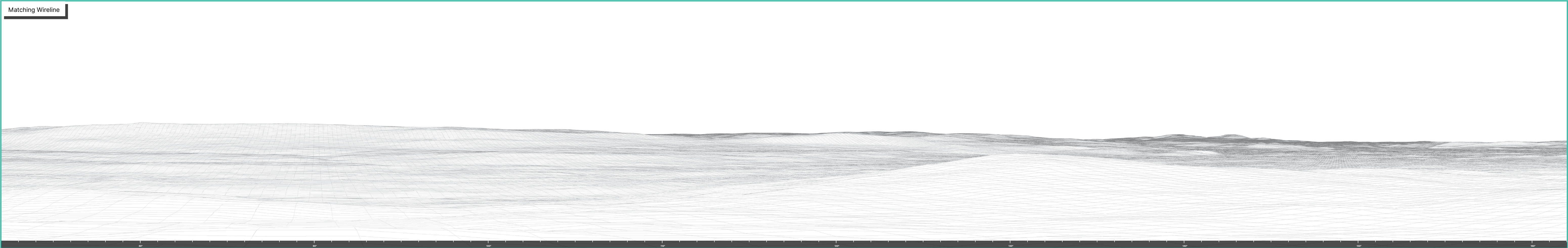


53.5° View Extent

Existing View at 90°



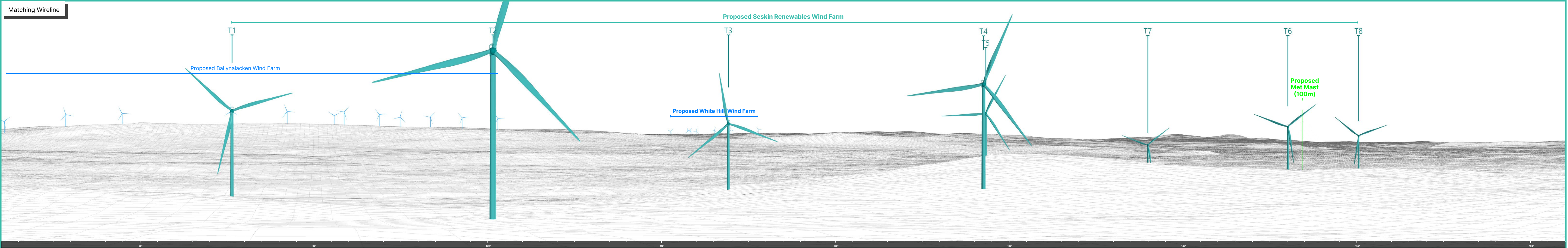
Matching Wireline



Proposed Photomontage with Cumulative at 90°



Matching Wireline



Proposed Photomontage with Cumulative at 53.5°



